



NEW 4 BEDROOM HOUSE

10 HIGHFIELD ROAD

MALVERN

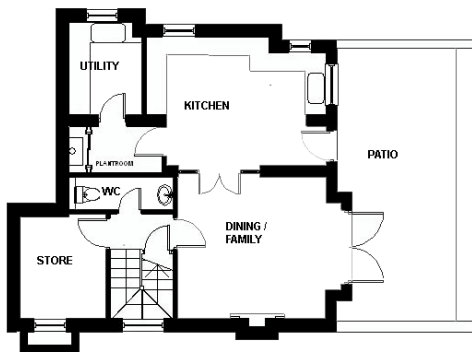
WR14 1HS

Accommodation on 3 Floors

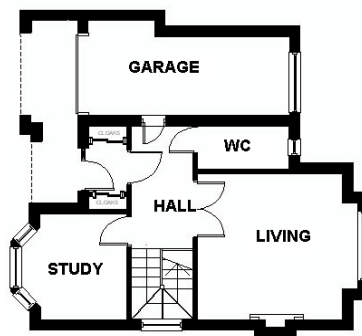
- Kitchen
- Utility
- Cellar Store room
- Plant room & Store Cupboards
- Family / Dining room
- WC's on all floors
- Vestibule Porch
- Lounge
- Study
- 4 Bedrooms
- Family Bath room
- En-suite to Master bedroom
- Attic storage
- Single Integral Garage
- Off road parking 2 – 3 cars
- Large South Facing Patio
- Open Views to the Rear
- Terraced Rear Gardens



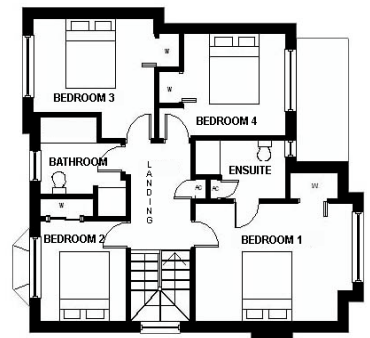
LOWER GROUND FLOOR



GROUND FLOOR



UPPER FLOOR



SPECIFICATION:

- Brick & Block construction with Tiled roof & Solid Concrete floors at all levels
- Energy Saving high specification Insulation to floor, walls and roof.
- Fully fitted Kitchen with granite work tops & Fully fitted Utility room
- Appliances include: Range cooker (dual fuel), American Fridge Freezer, Microwave, Dishwasher, Tumble dryer, Washing Machine
- Under Floor Heating with High Efficiency Gas Boiler
- Powder coated clad Aluminium Double Glazed Windows
- Feature Gas Fires to Family room & Living room
- 4 Double bedrooms all with Fitted Wardrobes
- Mains Pressure Hot & Cold water
- High specification Electrical & Communication Installation
- Intruder & Fire Alarm
- Tiled Bathroom & En-suite, Mains Pressure Showers, Fitted Vanity Units, Towel Rails
- Solid Ash Feature Staircase plus High Quality Doors
- Combination of Porcelain Tiled Floors and Wood Flooring to All Floors

COMPLETION:
EARLY SUMMER 2005

CONTACT:

ENVEX
CONTRACTORS LTD
Tel: 01905 371099

PRICE ON
APPLICATION